

57th Berks & Bucks Chess Congress

Saturday 26th to Monday 28th August 2023

St Piran's School, Gringer Hill, Maidenhead, Berkshire, SL6 7LZ

An ECF Grand Prix Event

**Six round rated sections
(approximately 12 to 16 players per section)**

CHAMPIONSHIP AND CHALLENGERS

FIDE/ECF Rated

Prizes £72 £60 £48

RESERVES (ECF Rated)

Several sections

Prizes £72 £60 £48

Timetable

Saturday, Sunday and Monday	Rounds
10.00 a.m. to 2.00 p.m. (approx)	1, 3 & 5
3.00 p.m. to 7.00 p.m. (approx)	2, 4 & 6

Smoking is not permitted on the school site.

Sections

Players will play in sections according to their latest ECF rating. All sections will be ECF rated. The Championship and Challengers sections will be FIDE Rated. The FIDE-rated sections are open to all rated players and to unrated players with ECF ratings of 1800 or above. The Reserves sections are open to all unrated players and to rated players with ratings below 1900. Players eligible for both the rated sections and the Reserves are asked to specify which section they would prefer to play in.

The organisers reserve the right to merge the Championship and Challengers sections.

Entry details

The entry fee for all sections is £30. English players in the FIDE-rated sections who are not ECF Platinum or Gold members will be required to pay an ECF surcharge of £12. All players in the Reserves sections who are not ECF Platinum, Gold, or Silver members will be required to pay a £9 surcharge.

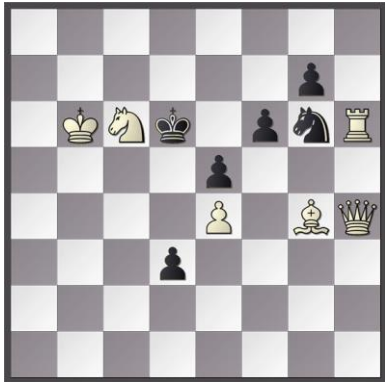
Entries will be accepted by post, online, or by e-mail to the congress secretary. Online and e-mail entries will not be deemed accepted until payment has been made.

Entries received after Tuesday 22nd August are subject to a £4 late entry fee. Entries will not be accepted on the day.

The organisers reserve the right to refuse entry for any lawful reason.

Playing in Every Round

Owing to the structure of the congress, ½ point byes pose greater than usual difficulties, and are granted only in exceptional circumstances. Players for whom this rule poses difficulties should contact the congress secretary.



White to play and mate in 2

For solution, see the congress website, www.berksandbuckschess.com

www.berksandbuckschess.com

Rate of Play and Default Time

The rate of play in all tournaments is all moves in 90 minutes, plus a 30 second cumulative increment for each move starting from move one. Players arriving more than thirty minutes after the published start time of the round will be defaulted.

Berkshire Individual Championship

The Congress incorporates the Berkshire Individual Championship, and the highest-placed Berkshire player in the Championship section will receive the title of Berkshire Individual Champion, subject to the rules of the Berkshire Chess Association.

Trophies

Trophies will be provided to most prizewinners. For details, see the congress website.

Refreshments

Refreshments will be provided by Hacketts of Witney, who will have breakfast pastries freshly baked each morning, sausage rolls, Cornish pasties, sandwiches, baguettes, wraps and toasted Panini. Snacks will include crisps, chocolate bars, cakes and fruit. Drinks will include tea and coffee, hot chocolate, peppermint, green, and rooibos teas, and soft drinks, orange and apple juice.

Bookstall

A bookstall, provided by Francis Bowers Chess Supplies, will be available.

Travel and Accommodation

For links to relevant travel and accommodation details, please see the congress website, www.berksandbuckschess.com, or contact the congress secretary.

Congress Website

Further details relating to the congress, including section structure, are on the congress website, and players are referred to this.

Congress Secretary, Treasurer and Arbiters

Secretary: Liam Varnam, 17 Church Lane, Girton, Cambridge, CB3 0JW

Tel: 07950 938 403 Email: liamvarnam@yahoo.co.uk

Treasurer: Nigel Dennis

Arbiters: Tim Dickinson

ENTRY FORM 57th Berks & Bucks Chess Congress

Name:

Address:

Telephone:

E-mail:

Chess Club (if any):

Latest ECF Rating:.....

Latest FIDE Rating:.....

ECF Membership Number:.....

Date of Birth:.....

£

Entry Fee (all sections): £30

ECF Surcharge (see 'Entry Details') £12/£9

Late Entry Fee (after 22/08/2023) £4

Donation:

Total enclosed:

Preferred Section for those who have a choice

Please indicate: - FIDE Rated Section / Reserves

Please make cheques payable to Berks & Bucks Chess Congress. Receipts will be sent if an SAE is enclosed.

Entries to: Liam Varnam, 17 Church Lane, Girton, Cambridge, CB3 0JW